

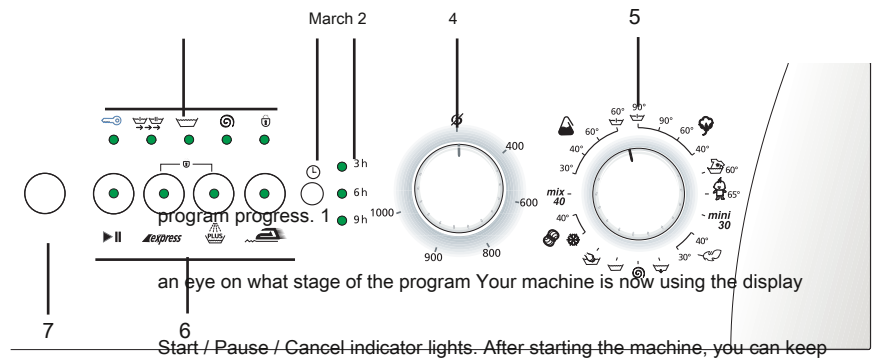
Washing machine | Manual

Remote Control

1- display program execution 2- selection key latency time display 3-

4- spin speed selection knob 5- program selection knob

6 Key support functions 7 Key On / Off

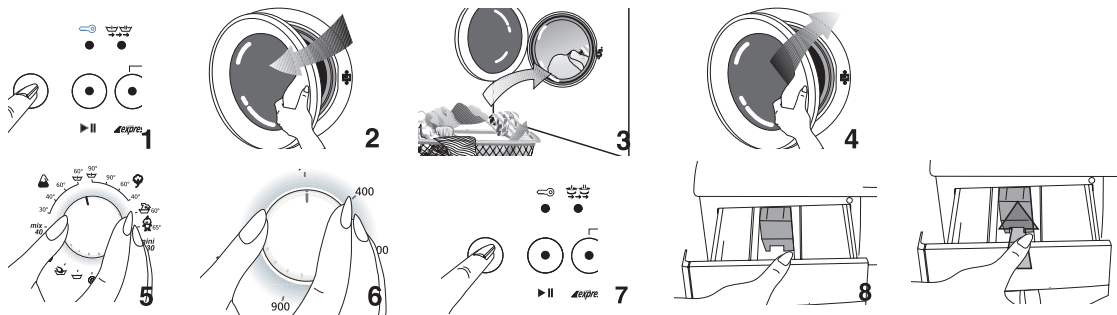


1 Select a program and start the machine

Insert the machine plug into the electrical outlet. And including those machine by pressing the «On / Off». Open the door, the handle potya- UHC. Boot the machine without exceeding the load weight, and close the door. Determine the appropriate program from the program selection table according to the type of laundry, the degree of contamination and the washing temperature. Set the program selector to the desired washing temperature programmu-. Select the appropriate spin speed according to the selected program. If your current use

and softener. Zapu- Stih machine by pressing Start / Pause / Cancel button. those additional function press desired auxiliary function.

After that fill the dispensing container of your machine corresponding powder



Program Selection Table

Program	type of laundry	max loading (Kg)	Program Duration (min).	Consumption of water (L)	Ology elec- consumption (kW / h)	express Quick wash The position SCAN Plus	PLUS Function Antismianie	cancellation of the spin
Cotton + Pre-wash 90	Durable woven fabrics of cotton and flax high dirtiness	4.5	160	55	2.00		•	•
cotton 90	Durable woven fabrics of cotton and flax high dirtiness	4.5	150	50	1.60	•	•	•
Cotton 60 *	Fabrics made of cotton and flax normal dirtiness resistant to high temperature	4.5	135	49	0.85	•	•	•
cotton 40	Fabrics made of cotton and flax small degree of contamination which are sensitive to high temperature	4.5	125	45	0.60	•	•	•
Intensive wash 60 Durable woven fabrics of cotton and flax high dirtiness		4.5	160	50	1.00		•	•
Kid Mode 65	Durable woven fabrics of cotton and flax high degree of contamination (children's clothes, etc.)	4.5	170	60	1.00		■	•
Pre stir- cc + 60 Synthetics	Blended fabric of cotton / synthetic high degree of contamination resistant to heat	2.5	125	45	0.95		•	•
synthetics 60	Mixed normal tissue dirtiness of cotton / synthetic ticks resistant to heat	2.5	115	40	0.90	•	•	•
synthetics 40	Mixed fabrics made of cotton / synthetic small degree zagryaznenno- STI resistant to heat	2.5	105	40	0.50	•	•	•
synthetics 30	Very slightly soiled fabrics or mixed fabrics of cotton / synthetic tics, sensitive to high temperatures	2.5	90	40	0.25	•	•	•
Mixed mode 40	Cotton fabrics and linens normal dirtiness sensitive to high temperature	2.5	95	40	0.50	•	•	•
Delicates 40	Thin fabrics, thin synthetic fabrics, mixed fabrics based on cotton	2	70	45	0.35		•	•
Delicates 30	Thin fabrics, thin synthetic fabrics, mixed fabrics based on cotton	2	65	45	0.25		•	•
wool 40	Wool fabrics and fine mixed with label recommending mashin- hydrochloric washing	1.5	55	40	0.25		•	•
Wool Wool in cold water and fine linen labeled machine washable		1.5	45	40	0.03		•	•
Handwash 30	Special program for silk, cashmere or linen without designation machine washable	1	40	thirty	0.15			•
Mini-30	Special program for linen fabric small degree of dirty contamination	2.5	thirty	40	0.20			•
Rinsing	rinse program	4.5	23	eleven	0.04			•
extraction	spin program	4.5	eleven	-	0.03			•
Pump	pump program	-	2	-	-			

* a program determining the power consumption of the washing machine (EN 60456)

2 Technical features of your washing machine

model	WMD 24500 T WMD 24500 WMD 24500 TBL the TS		
	WMD 24560	24580 T R WMD	
Maximum capacity for drying laundry (kg).	4.5	4.5	4.5
Height x Width x Depth (cm)	85 x 60 x 45	85 x 60 x 45	85 x 60 x 45
Net Weight (kg).	59	59	59
Power supply (V / Hz).	230/50	230/50	230/50
Current consumption (A)	10	10	10
Power, W)	2350	2350	2350
The cycle of washing - rinsing (rev / min.).	52	52	52
spin cycle (max vol. / min.)	600	800	1000

To improve the quality pokazate- leu machine in its specifications are subject to change without notice. Numerical characteristics indicated in the instruction exploitation tion schematic and may not be completely identical to the actual characteristics of your machine. The data plotted on the rating plate of your machine specifications and data provided in the documents obtained in the laboratory under standard conditions. These values can vary according to the mode of operation of the machine and environmental conditions.

3 Cautions on safe operation of the machine

- This machine is designed to work at home.
- If the fuse in your house is designed for current is less than 16A, it is necessary that a qualified electrical trick you to set a fuse designed for a current of 16 A.
- In the case of the use or lack of the transformer during operation, a qualified electrician should connect the ground to the car. We are not responsible for any use before grounding.
- Never place your machine on a carpeted floor.
- Please contact an Authorized Service Center for the fault electrical plug / cable.
- At first use, washing must be performed on the program Cotton 90 ° C without loading with laundry for getting your machine ready for washing.
- quality indicators wash your machine depend on the quality of water and detergent used. If water of low quality and unsuitable detergent used, stains remain.
- Your machine is programmed for starting operation again when electricity is off and then on again. You can not press the On / Off button to cancel program. The machine will continue the program after the inclusion on electricity. press to cancel the program
- > Start / Pause / Cancel <and hold it for three seconds. (See. "Canceling the program" section).
- If after the start of your machine blinks key on the key Start / Pause / Cancel, then the door is not locked. Open and close the door again and start the washing program again.
- If the program progress display flashes the indicator "Wash", either there is no water or tap is switched off. Check faucets. Turn your machine off and on again. If the problem persists, unplug your machine, turn off the water tap and formed tites authorized service.
- If the program is started and can not make a choice pro- gram, your machine might be in protection mode due to infrastructure problem (voltage of the water pressure, etc.) Press and hold
- > Start / Pause / Cancel <for 3 seconds to switch the machine to the installation of the manufacturing plant.

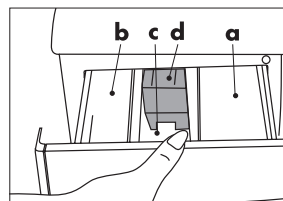
large laundry. Cm. Partition of practical and useful information for soiled laundry. Your machine can sti- army woolens with labels "Machine wash" ("Machine stir- ka") or «No-matting» ("Do not shoot down in whom") using a special woolen program. Fine linen with labels «Do not wash» («Do not wash") or «Hand wash» («Hand wash») (silk, Ka shemir, pure wool, etc.) can be washed in the special program Noi hand washing. Opening the front door

Pull the handle to open the front door. Front dver- tsa your machine is designed to be opened only when the machine is not working. If the indicator «Door» («Dver- ya") is lit, the door can be opened. Loading the laundry into the machine

Fill the machine by unfolding and not squeezing laundry. Po- place handmade things in the car, turning them inside out. Make sure there is no laundry jammed between bellow and front-door.

Close the loading door by pushing it. If loading door is not closed correctly, the machine will not operate. The choice of detergent and softener Quantity of the detergent used depends on the rigidity of water and how soiled laundry. The recommended dosing ings indicated on the package. If your laundry is low soiled and / or hardness of water is low use less detergent as indicated on the package. Otherwise, it can lead to excessive pe- noobrazovaniyu.

You should use detergent specially prednazna- chennoe for automatic washing machines. Avoid THE USE OF bleaches containing sulfur or chlorine. Put detergent in powder form and softener in the respective compartment of the container and close a dispensing container for detergents.



a. Compartment for powder moyu- conductive means for the pre-wash.

b. Branch for powder moyu- present means for the main wash.

c. A dispensing container for a softener.

d. Siphon.

Fill the softener as recommended on the packaging datsiyami (usually <100 ml; 1 tea bag). Never fill more than "MAX". An excess amount will be merged into a suction cup and be consumed in vain. You may need to fill softener again. If eventually softener is thickened, pre bave little water to dilute it. Softener may obstruct the washing siphon and block the flow.

Auxiliary Functions Express: Shortens washing time for lightly soiled Tkachev it. This function can be used for cotton and synthetic programs with a temperature below 60 ° C.

Rinse plus: With this function, your machine doba-

4 repairing the wash cycle

Before starting your machine please refer to the information below:

You connect the cable to the electrical outlet? Did you connect draining hose correctly? You have closed the front door? You have opened the tap? Sorting the Laundry

Sort the laundry according to the type of fabric, color, level of dirtiness and allowed washing temperature. Not stiray- those white laundry together with colored ones. Remove hard parts, eg, belt, cufflinks, clips curtains, etc. or place laundry in a cloth bag for washing. Empty pockets. Fasten zips and buttons. Linen is very small in size, eg, baby clothes may get into inside of the drum, into pro- masonry, pump filter, hose, etc. To prevent this, it is recommended to place such laundry in a string bag or

vit another rinse process to the three rinse processes that it has already fulfilled. This additional rinse will reduce The effects of detergent residue on sensitive skin.

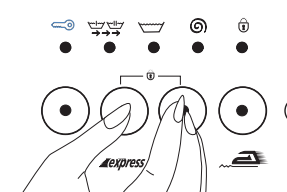
Easy ironing: Select this option in order to avoid crushing your things. When Easy ironing, please load less laundry. Special washing program and annealing of ma reduce creasing and your clothes will be easy to iron.

Handle selection Spin speed: You can spin the laundry at speeds up to 1000 rpm. / Min. models of washing machines, koto- rye are key selection cycle. Your machine will spin not more than 800 at a rate of about. / Min. for synthetic programs and 600 rpm. / Min. for the wool program. Also, if you do not want The relative treatment press your clothes, you can choose the position of "No spin" ("No spin").

Pressing the "On \ off"

When you press the "On / Off", your machine ready for selecting program. When you press the "On / Off" «Door» indicator lights up ("door"), which means "door can be opened." Press the "On / Off" again to switch the machine off.

Pressing the "On / Off" does not mean that the program will start. To start the program you have to press the "Start / Pause / Canc- el".



Parental Lock

In order to progress we programming during the laundry was not affected by pressing keys children susche- exists a function Child lock. To enable child-proof lock, after washing begins, press simultaneously function buttons Express and Rinse Plus and hold for three seconds.

Indicator additional function Prewash will flash continuously.

After the end of the program to start a new program or alter the program you have to disable the child lock. To do this, press the same button and hold for three seconds. Indicator of the child-proof lock is deactivated.

Select function

Additional functions selected in accordance with the selected pro- gram can be selected by pressing the corresponding key. The indicator of the selected function lights up.

If some incompatible additional functions are selected together, some of them are turned off. For example, if the programming we have cotton, additional "Express" function and rinse plus can not be selected together. After selecting the "Express" and then pressing the "Rinse plus" button ("Rinse plus"), pro- grams quick wash will work, and "Express" function indicator goes off.

Progress under a program

After the start of operation of the machine the corresponding program indicator on the program progress display illuminates. Upon completion of step pro- gram that step's led is off and next step's led is turned on. "Ready" indicator on the end of the program ("Ready") zago- ritsya again.

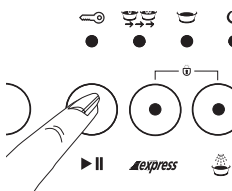
During machine operation you can press "Start / Pause / Can-

cel "key for getting machine to" Pause "mode. In this case "Start / Pause / Cancel" indicator ("Start / Pause / Cancel" button) will blink.

Changing the program

You can use this feature for washing laundry in the same group it Tkachev at lower or higher temperatures. For example, instead of the program Cotton 60 can use the program Cotton 40. You are a boron program Cotton 40 Cotton 60 instead of the program, press the "Start / Pause / Cancel" and the machine will switch to the mode "Pause". Pover- Nita program selector to select the program Cotton 40. Even if, during the work program established by the program will be changed with the program selection button, it will be carried out initially selected program. To change the program are fulfilled washing program should be canceled. (See. Canceling a program).

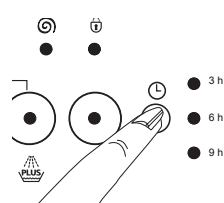
However, the selected optional features must be compatible with washing program.



Adding laundry

If you want to add laundry to your machine after the start of the program, press the «St- art / Pause» to switch the machine mode "Pause". If the water level in the machine The corresponding, on the program progress display "Door" indicator lights ("door") and the laundry can be added to the machine. If the indicator

«Door» («door») is lit for one minute, the water level in the machine is not appropriate, and the laundry can not be added. You can press "Start / Pause / Cancel" to continue the programming we have.



Delayed program start time

With the help of «Time delay» The relative key, you can lay down that the selected programming we at 3:00, 6:00 or 9:00. Pressing «Time delay» once will set the delay time of the start program complements You are a 3 hour and illuminates The corresponding indicator. If the same key

is pressed again, the delay start of the program will be 6 hours, and if the same key is pressed a third time, the delay of the start of the program will be 9 hours. If the delay button start the program is pressed again, the delay function is canceled. When you press the "Start / Pause / Cancel" after setting the delay function the program has started, the program will be started with a delay. During the delay period, the door can be opened and the machine may be added to the laundry. When you press the "Start / Pause / Cancel" after setting the delay function of the program, you can switch machine to "Pause" mode and change delay time.

Completion of the program

Upon completion of the program "Door" indicator lights ("door") and the door can be opened. The machine is ready for next washing. Press the "On \ Off" to turn off the machine.

linen unloading

After completion of the program the machine automatically stops. Is switched off the water tap. Pull the handle and open loading door. Turn off your machine by pressing "On \ Off" button. After taking laundry out keep the loading door open and let the drum ventilate. Check the gasket and clean.

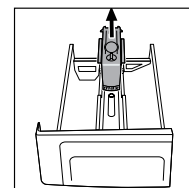
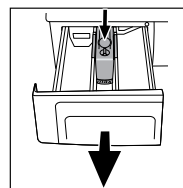
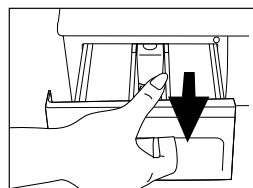
5 Care and maintenance of the machine

A dispensing container for detergents

After some time of operation the machine remains of powder detergents can accumulate in the distribution kontey- Nere. To clean dispensing container press otme- chennuyu point of the siphon on softener compartment and push the drawer towards yourself. Wash the container with water.

Siphon

Do not neglect cleaning suction cup when it becomes soiled. For snya- ment sucker first remove a dispensing container for detergents. Clean it to prevent the lock remains softer. Then install the sucker back into place and make sure it is installed correctly.

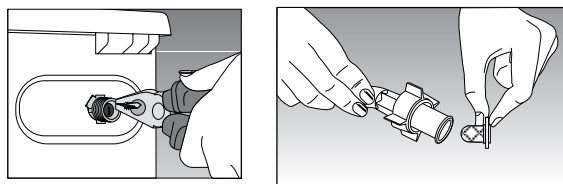


Filtered water supply

At each end of the hose where it is connected to the tap tap water, as well as in each intake valve water, have allowed proposing the reverse side of the machine, installed filters. These filters blocks entrance of foreign objects and dirt to the machine. The filters must be cleaned regularly to avoid clogging. To do this, disconnect the water supply hose. Clean the top of the filter water inlet valve brush. If it is clogged, you can pull it out with tweezers. You can take out the flat side of water inlet hoses with its seal and clean under running water.

Hose

There is a risk of freezing in cold regions of the hose, if your machine is installed in a cold place. When the machine is not in use, remaining water in the hoses and the pump in the filter should be merged. Water inlet hoses can be drained after disconnecting them from the tap.



Purification pump filter

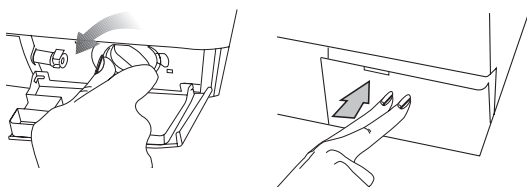
The machine has a filter system to maintain a long pump life Tel'nykh by trapping foreign objects e.g., buttons, fabric fibers, which fall within the pump during the water draining. It is recommended to clean the filter when it is dirty. For this:

Disconnect the plug of your machine from the mains. The relative Kreuth filter in the bottom right corner by pressing marked space on the lid.

The risk of scalding: In the drum can be about 15 liters of hot water at a temperature of 90 ° C. Open the filter carefully.



Before opening the filter drain the water through the drain hose. Disconnect the drain hose. Prepare a suitable container and open the cover of the hose. After the water has drained, replace the cap in place. Open the filter by turning and draining the remaining water (max 30 ml) via the filter plug. Clear the foreign objects inside the filter. Upon completion, turn it clockwise and close. Close the filter cap by pressing on it.

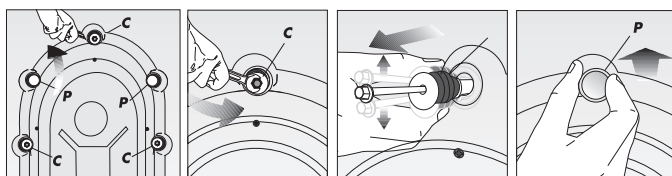


Attention!

If the filter and hose plug does not match, the plug will pass water.

6 installation

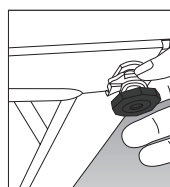
1. Remove the safety bolts are used when transporting.



Before operating the washing machine you must remove the transit bars! For this:

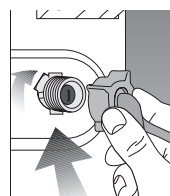
1. Loosen the bolts with "C" markings, loosening their corresponding conductive wrench counterclockwise.
2. Remove the safety bolts are used when transporting.
3. Insert the plastic plugs labeled "P" in otver- stie vehicle mounting, rotating them in the direction of arrow and pushing.

Pay attention, please! Keep transport za- presses the case when the machine is to be transported again. Always transport your machine with transportation locks.



2. Leveling the feet

In order to operate your machine without noise and vibration it must be properly balanced. Four feet of your machine can be adjusted. First loosen Plastics massive counter bolt. After adjusting the feet for leveling the machine, tighten the counter bolt.



3. Connecting supplying / draining water

a) a water supply hose

Your machine is connected to water supply by special hoses supplied with the machine, pull a together. Hose supplied plastic inserts or plastic bag for eliminating leaks in the attachment points. These pads should be used with each

side of the connection.

Gaskets on the machine side should be connected to the channel filter.

After connecting the hose, check all connections for leaks. To eliminate any risk of occurrence address the water leakage keep the taps off when machine is not used.

Your machine will operate efficiently when the minimum pres- sure water faucet will be 1 atmosphere, and a maximum of 10 atmospheres. Practically 1 bar po- giving 8 liters of water per minute when tap is fully on.

Connect the hose to the machine. Hold hands bolts, without using a wrench.

Do not connect the machine to a hose supplying water to the hot water. If the machine is connected to a part of Y to two hoses for supplying water and machines with one water inlet temperature of the water will be more 40 ° C, the machine can switch to the protection mode regime.

b) the water drain hose

water drain hose may be attached to the bath tub, or directly to the drain. The hose should not be bent. The drain hose must be fixed to the holder so that it does not fall to the ground. The hose must be placed at a height of between 40 and 100 cm from the ground. The drain hose may be placed directly into the sewerage insulating drainer.

4. Electrical connection

Connect the power cord to the power supply, the corresponding parameters of the maximum voltage and the rated current indicated on the rating plate, which is arranged inside the kick plate. Note! Page 1 - steps to be taken before the pre-operation of the washing machine in a fully automatic mode and warnings on safety ex- pluatatsii.

Make sure that you have connected to the grounding outlet elektropita- Niya.

7

Before contacting the service support

You operate the machine, but on the panel lights are off.

Check the grounding of the electrical outlet or a blown fuse. Check if the door is closed anterior NJ correctly.

Water does not enter the machine.

Check if the front door is closed properly. Dnye its plumbing valves are closed or clogged water intake filters.

Taken water is directly discharged.

Check whether the drain hose under the ukazani- s operating and there is no manual set.

Water flows out of the machine.

Check the water supply and drain hoses. Tighten compound. washer hose can be worn. If the reason does not wish to set up yav- one of the above problems, the incorrectly closed pump filter.

From the distribution container for the detergent foam coming out.

Check the suitability of your laundry detergent in an automatic washing machine. Next time, use less detergent.

The pump does not drain.

Clean the pump filter. Check whether the drain hose is bent If there is a need for cleaning the filter pump, read the relevant section of the manual.