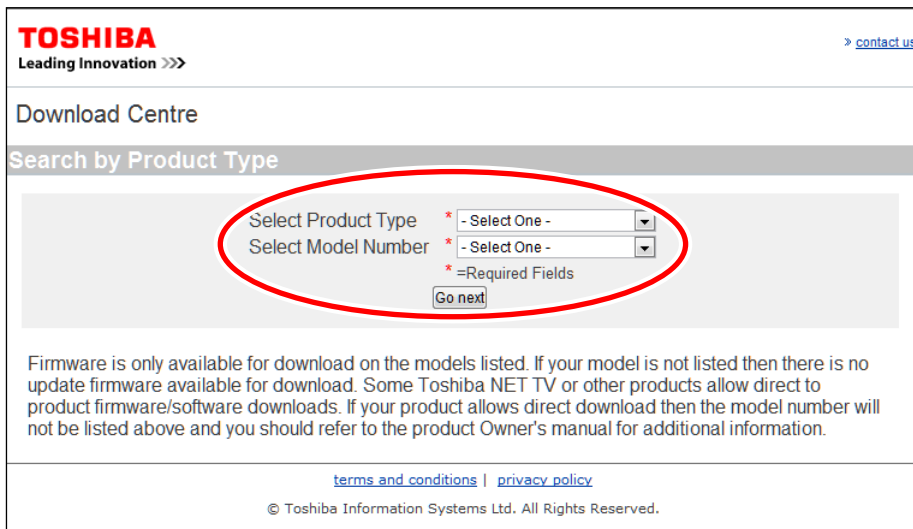


How to download the upgrade file

- 1 Select the Product Type and Model Number from the pull-down menu on the website.



TOSHIBA
Leading Innovation >>> [> contact us](#)

Download Centre

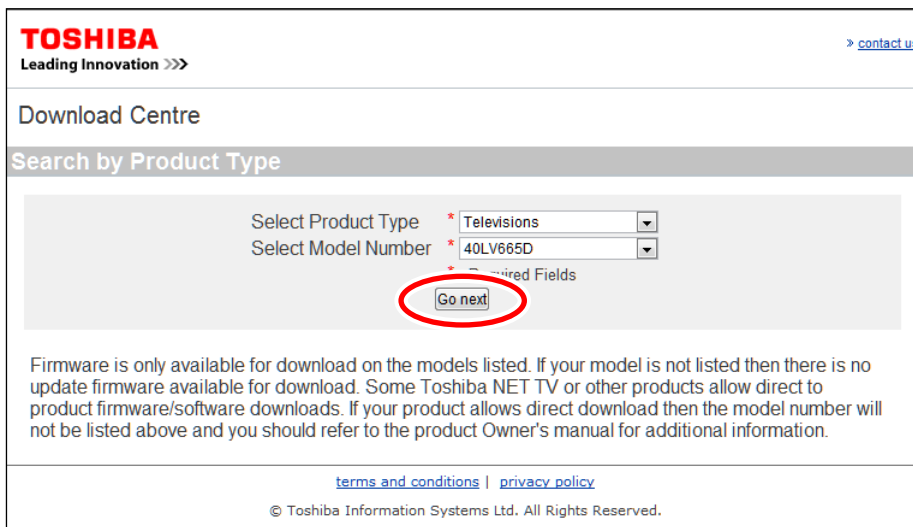
Search by Product Type

Select Product Type * - Select One -
Select Model Number * - Select One -
* =Required Fields
[Go next](#)

Firmware is only available for download on the models listed. If your model is not listed then there is no update firmware available for download. Some Toshiba NET TV or other products allow direct to product firmware/software downloads. If your product allows direct download then the model number will not be listed above and you should refer to the product Owner's manual for additional information.

[terms and conditions](#) | [privacy policy](#)
© Toshiba Information Systems Ltd. All Rights Reserved.

- 2 Click the “Go next” button.



TOSHIBA
Leading Innovation >>> [> contact us](#)

Download Centre

Search by Product Type

Select Product Type * Televisions
Select Model Number * 40LV665D
* =Required Fields
[Go next](#)

Firmware is only available for download on the models listed. If your model is not listed then there is no update firmware available for download. Some Toshiba NET TV or other products allow direct to product firmware/software downloads. If your product allows direct download then the model number will not be listed above and you should refer to the product Owner's manual for additional information.

[terms and conditions](#) | [privacy policy](#)
© Toshiba Information Systems Ltd. All Rights Reserved.

- 3** Click the download file shown under “File Name and Description”.

TOSHIBA
Leading Innovation >>>[> contact us](#)

Download Centre

Model: 40LV665D

Firmware Update Version
2.1.73.1

Overview
As part of our commitment to provide world-class service to our customers, Toshiba is supplying this firmware update for use by purchasers of Toshiba product(s) shown above.

Download files
*: EULA will be displayed when firmware file is choosed.

File Name and Description	File Size	Last Modified
Download Procedure	335 KB	2010/10/1
Installation Instruction	104 KB	2010/10/1
* 09MDL_ER_001_T.exe	12,330 KB	2010/10/1

[terms and conditions](#) | [privacy policy](#)
©Toshiba Information Systems Ltd. All Rights Reserved.

- 4** The download window will appear. Make sure that the applicable model number is the correct model number for your product.

TOSHIBA
Leading Innovation >>>[> contact us](#)

Download Centre

Model: 40LV665D

Firmware Update Version
2.1.73.1

Overview
As part of our commitment to provide world-class service to our customers, Toshiba is supplying this firmware update for use by purchasers of Toshiba product(s) shown above.

Download files
*: EULA will be displayed when firmware file is choosed.

File Name and Description	File Size	Last Modified
Download Procedure	335 KB	2010/10/1
Installation Instruction	104 KB	2010/10/1
* 09MDL_ER_001_T.exe	12,330 KB	2010/10/1

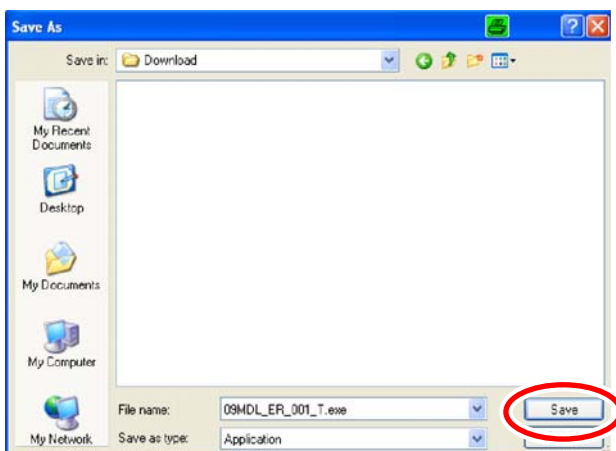
[terms and conditions](#) | [privacy policy](#)
©Toshiba Information Systems Ltd. All Rights Reserved.

- 5** Check “I ACCEPT” box and click the “begin download” button.

- 6** Click the “Save” Button.

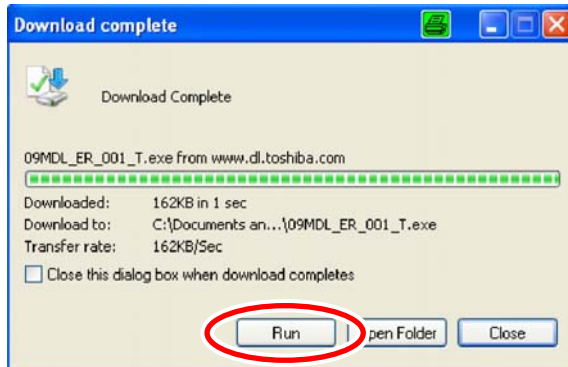


- 7** Save the file into an appropriate folder of your choice and select “Save”.



8 When the download has completed select “Run”.

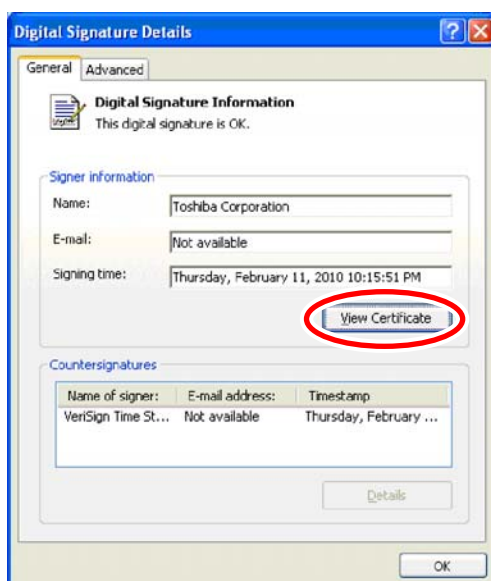
PLEASE NOTE: If you do not see the popup window displaying the “Run” button you will need to locate the file you saved to your computer and double click on the file to run the application.



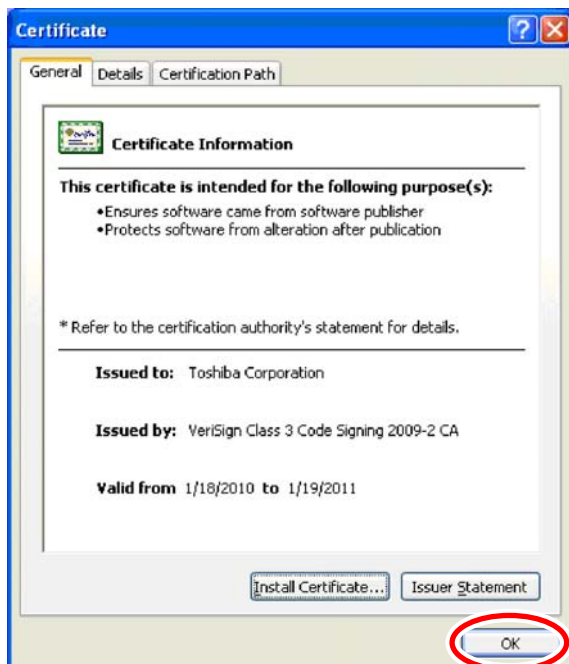
Click the “Toshiba Corporation” in Publisher to see the publisher information.



Click the “View Certificate” button to see the certificate information.



After viewing the certificate for Toshiba Corporation click "OK".



Click "OK" one more time on the next window.
Click the "Run" button to begin the extraction.



- 9** Insert a blank USB Thumb Drive into the PC USB slot.

PLEASE NOTE: Not all USB Thumb drives will work for Firmware Upgrading. The USB Thumb Drive should be formatted as a "FAT" or "FAT16" file system and NOT "FAT32". If the Firmware Upgrade does not work try a different USB Thumb Drive.

- 10** Copy the extracted downloaded upgrade file(s) including directories if present to the blank USB Thumb Drive. Now follow the instructions in the Installation Instruction.

PLEASE NOTE: This firmware is only for use with the Toshiba model downloaded. Do not use this firmware in any other Toshiba model or any other product. Any such use may cause damage to the device and/or attached equipment.