

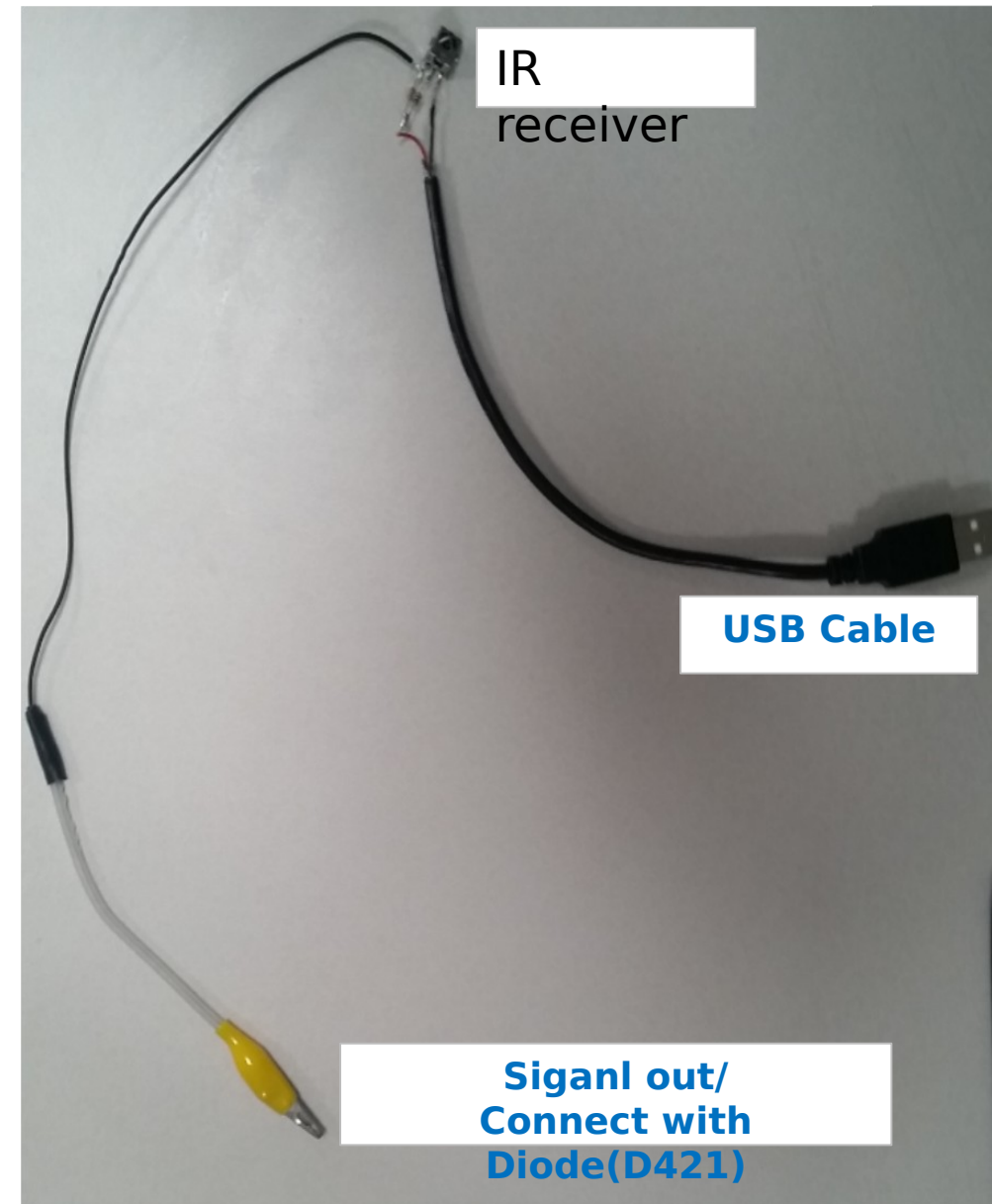
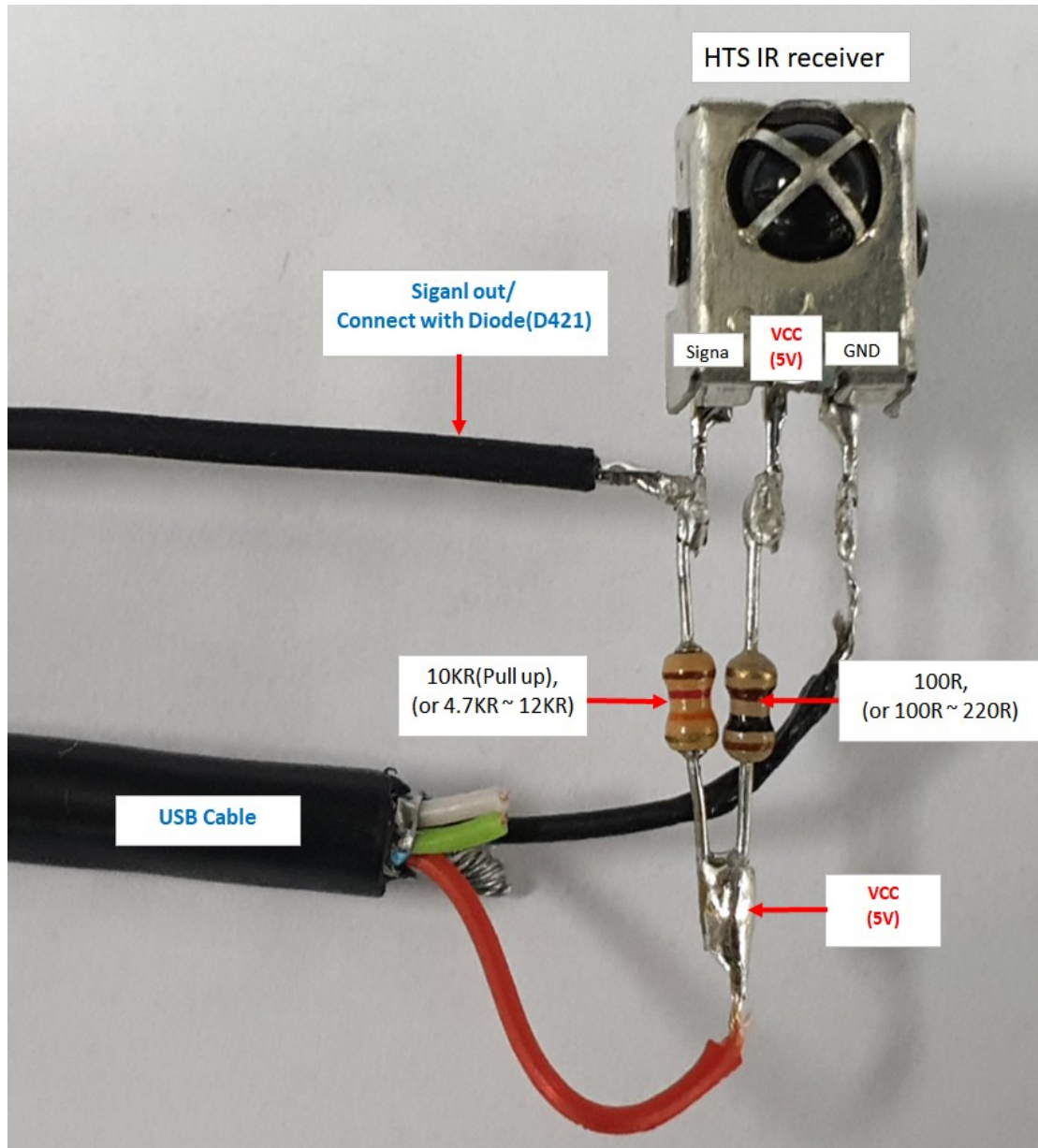
# How to Make your HTS Reset JIG

2020/07/07

# Background

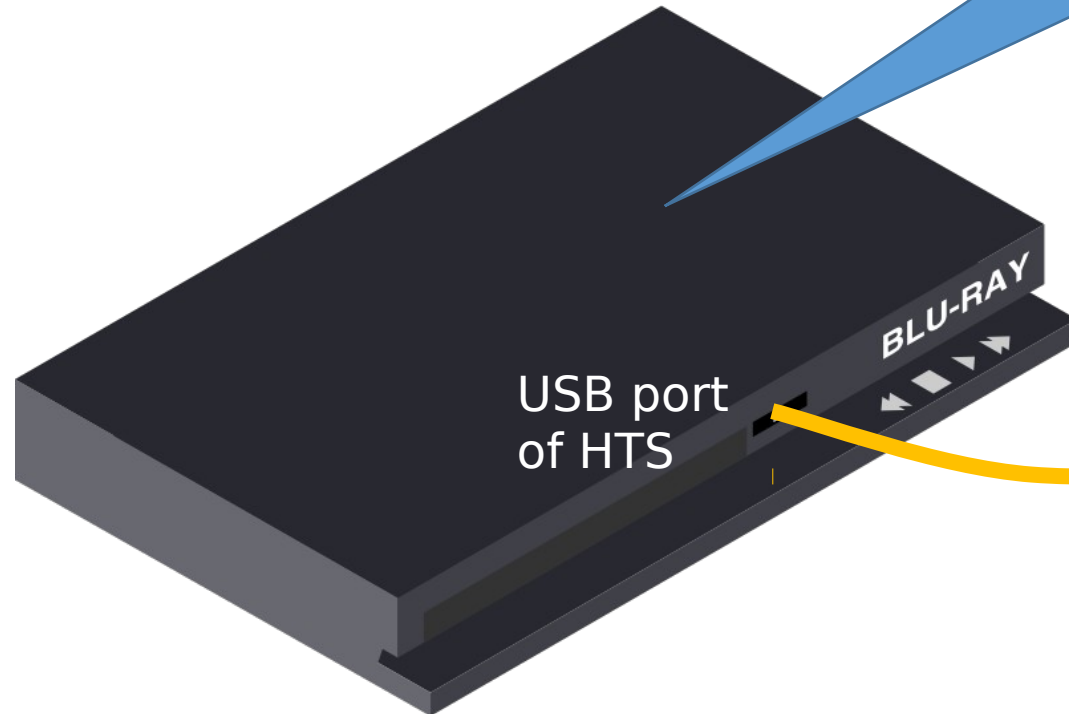
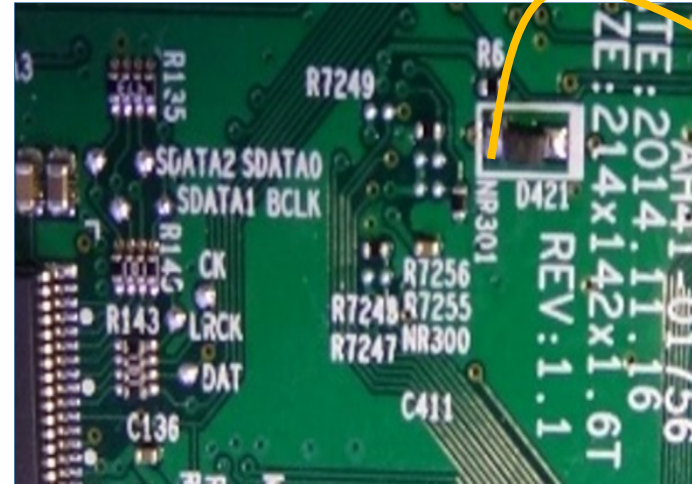
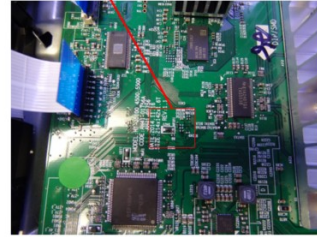
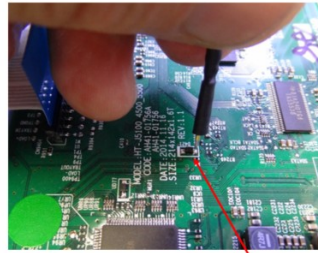
- Some Samsung Y2015 BDP/HTS products are stuck at reboot loop
- Samsung tech engineers world-wide worked together to find a better solution against this particular symptom
- Factory reset was found to be a good solution to fix the issue. But applying the factory reset to HTS was so tricky that the service engineer needs to try a specific steps of manual operations more than 30~40 times
- This document provides a guide how a service engineer can make IR JIG and repair

# 1. Make IR JIG



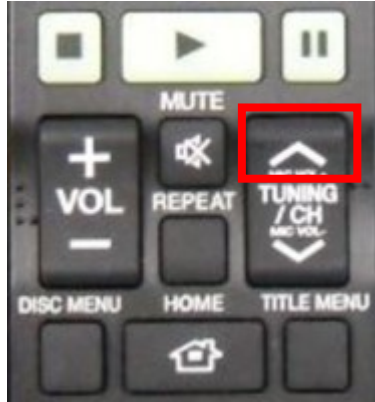
# 2. Repair Connection

1) Hold the probe from the RED wire securely on D421 as shown below.



# 2. Repair

1. Press and hold TUNING/CH UP Key on the Remote



2. Plug the power cord to an outlet. Booting will start.

3. Hold the TUNING/CH key till the display shows "STOP"

※ It would take around 20 seconds till you get "STOP" from Power On



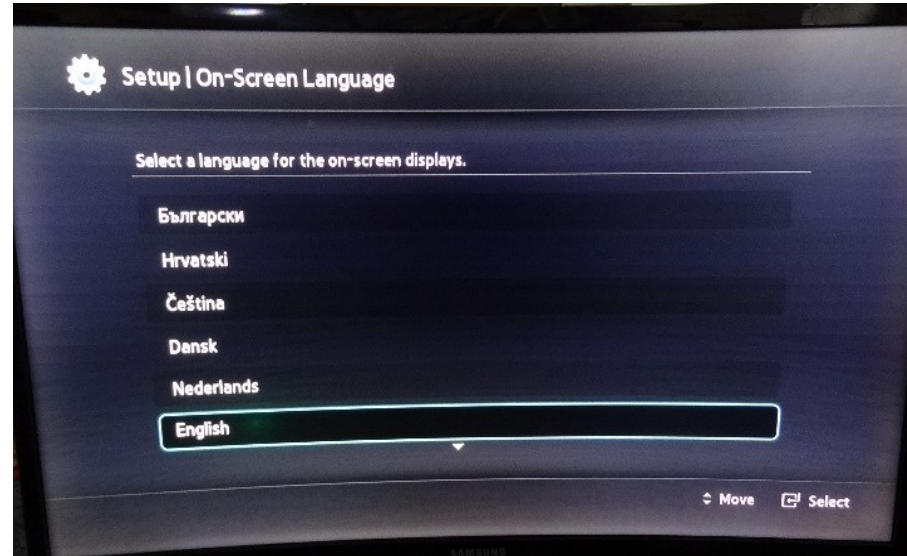
4. Unplug the power cord for 5 seconds or more to discharge fully and re-plug the cord

5. Repeat 5times from step 1 ~ step 4



## 2. Repair

6. If recovery has been successful , the unit will wake up and be in initial setup mode. Check that the unit operates correctly before returning to the customer.



※ If not and the set repeats reboot, unplug the power cord for 5 sec or more to discharge fully and repeat from step 1