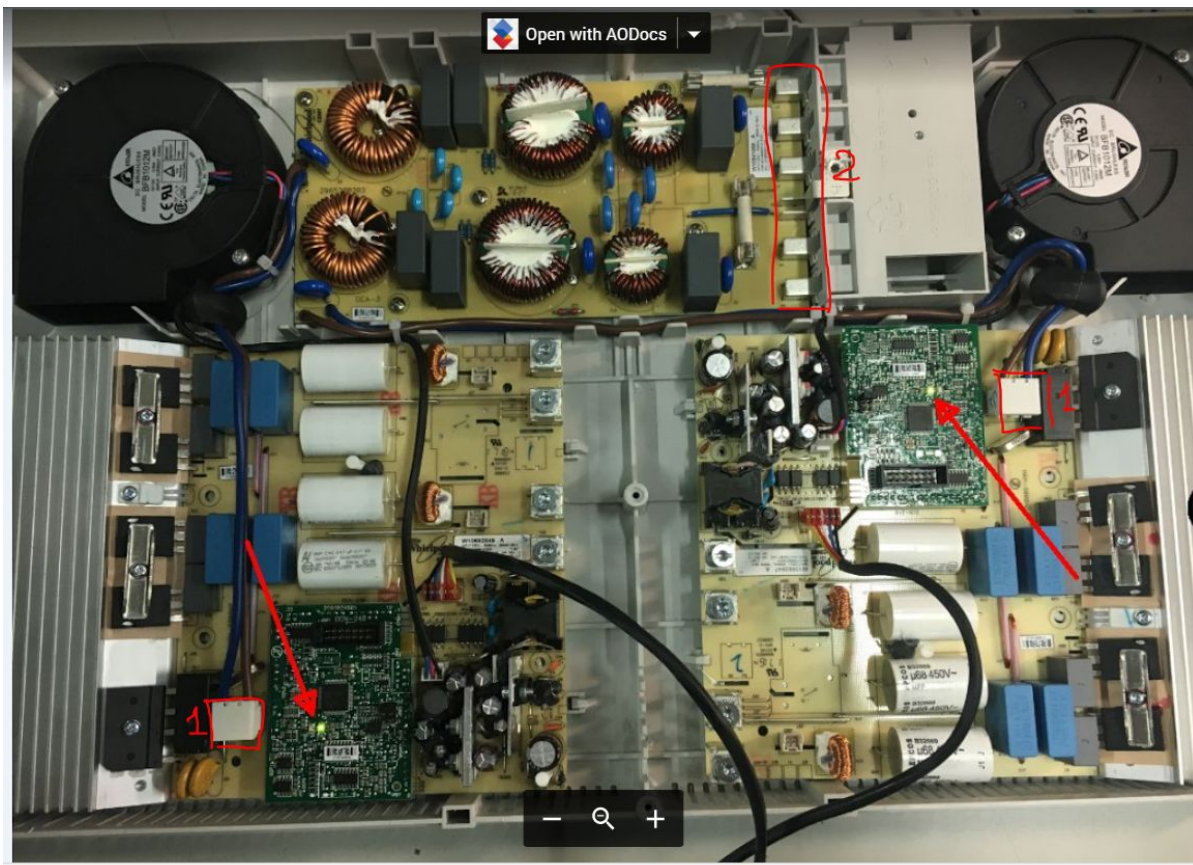


Resolution of Fault F47/switch on issues, on Induction hobs with electronic platform G7/G8

If the induction hob is included in above attached list, refer to following operations sequence to solve Fault F47/switch on issues:

When socket is engaged, the LEDs shown in the **picture A** below must light up, first with red light and then with flashing green light (for a few minutes).

Picture A



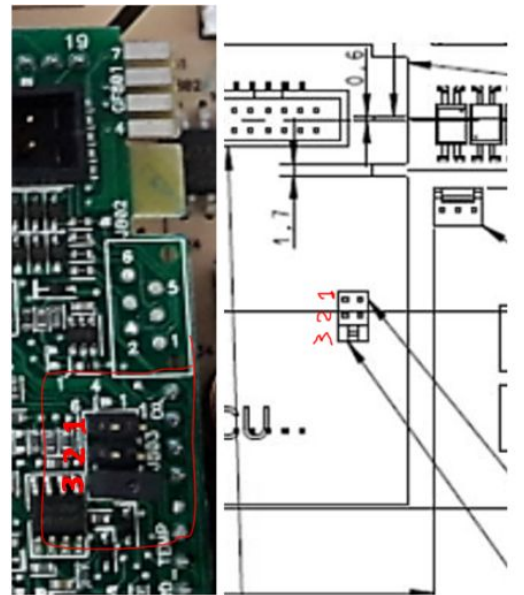
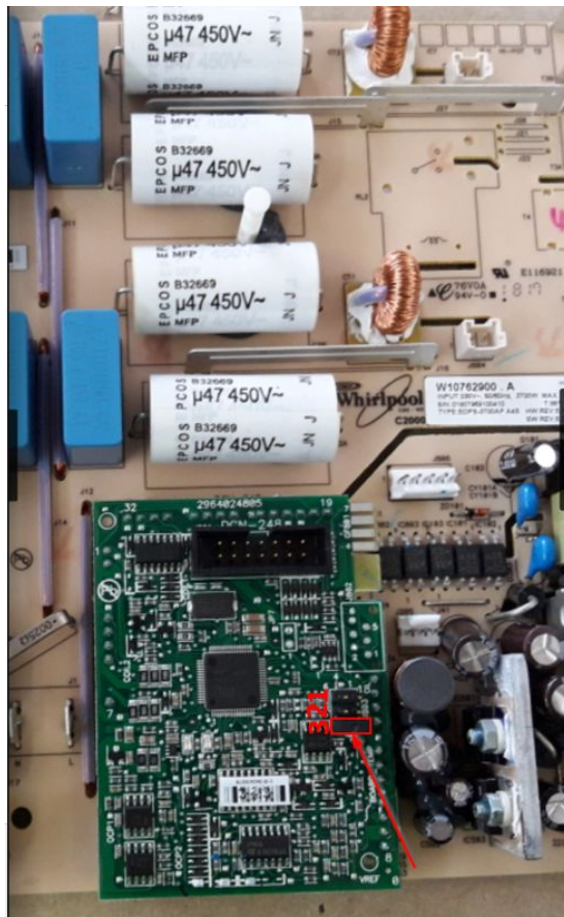
If the LEDs does not light up or lights up very fastly check the presence of the voltage in one of the two contacts of the connectors indicated with “1” in the **picture A** above with a multimeter or a tester.

You can have two options:

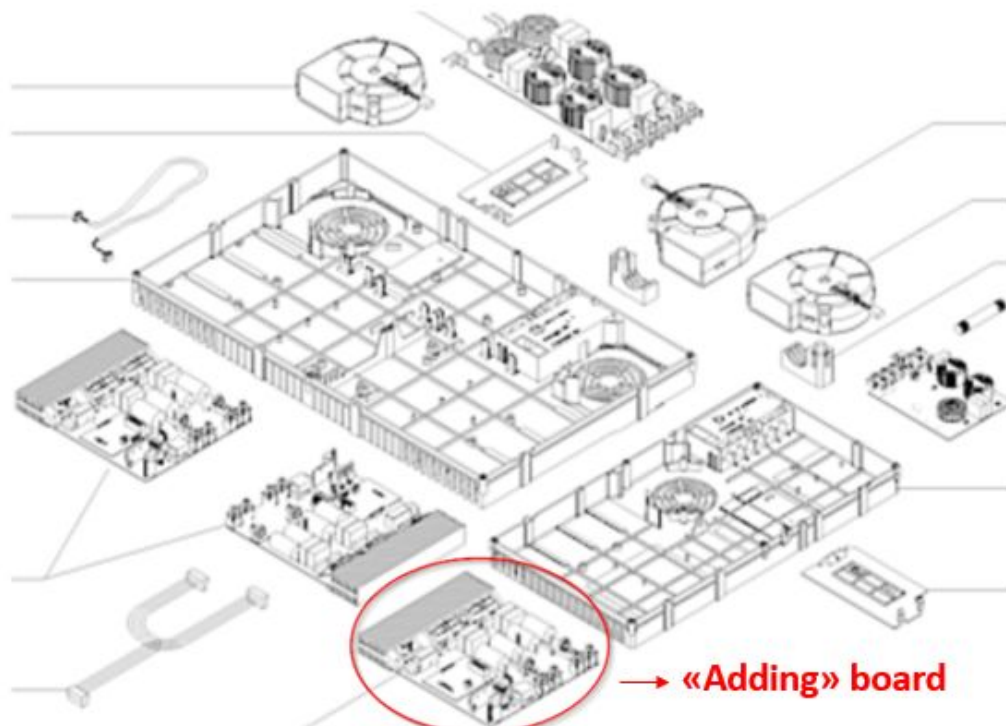
- **Option 1:** If the voltage at connectors 1 (even only one) is present-> replace the relative electronic board

Note a): in case **the left board** (see "Picture 1" below) has to be replaced and only in this case, remove the jumper in position 3 (position circled in red in the picture 1 below) from the board received as a spare part:

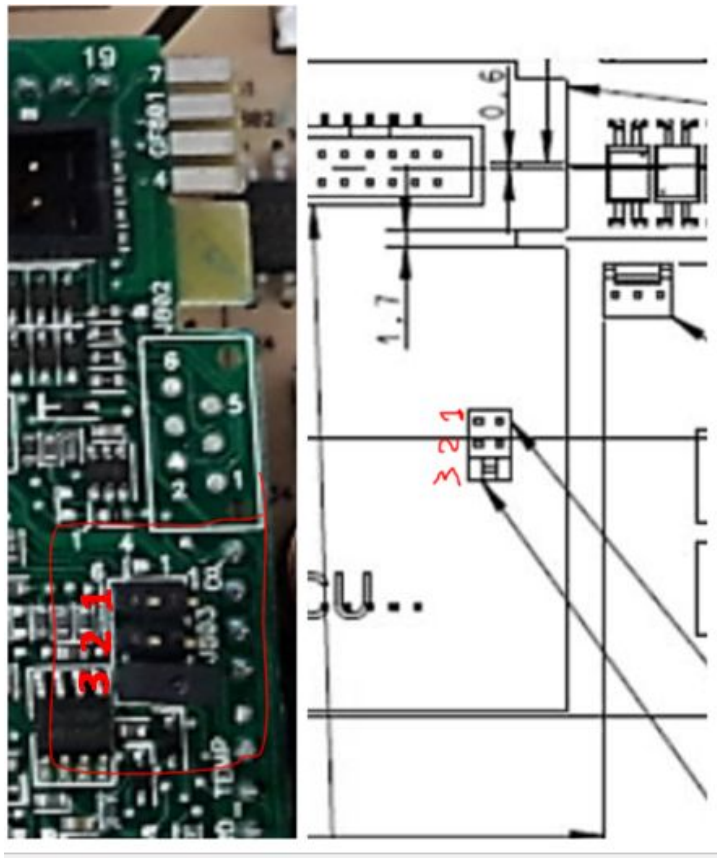
Picture 1



Note b): If you are assisting a 90cm hob and board to be replaced is the “adding” board shown in picture below (see red circle)



order the link jumper C00620186 and insert it in the position highlighted with red circle in the picture below (position 2), near jumper already present in the PCB received as spare part (jumper in position 3):



- **Option 2:** If the voltage at connectors 1 in Picture A (even one) is not present, check for voltage at connector 2 on the filter board. You can have two options:
 - **Option a:** If the voltage at connector 2 is present: replace the filter board
 - **Option b:** If the voltage at connector 2 is absent: check the terminal block assembly (**see picture B**) and then the cable-plug-socket-plug chain

Picture B

